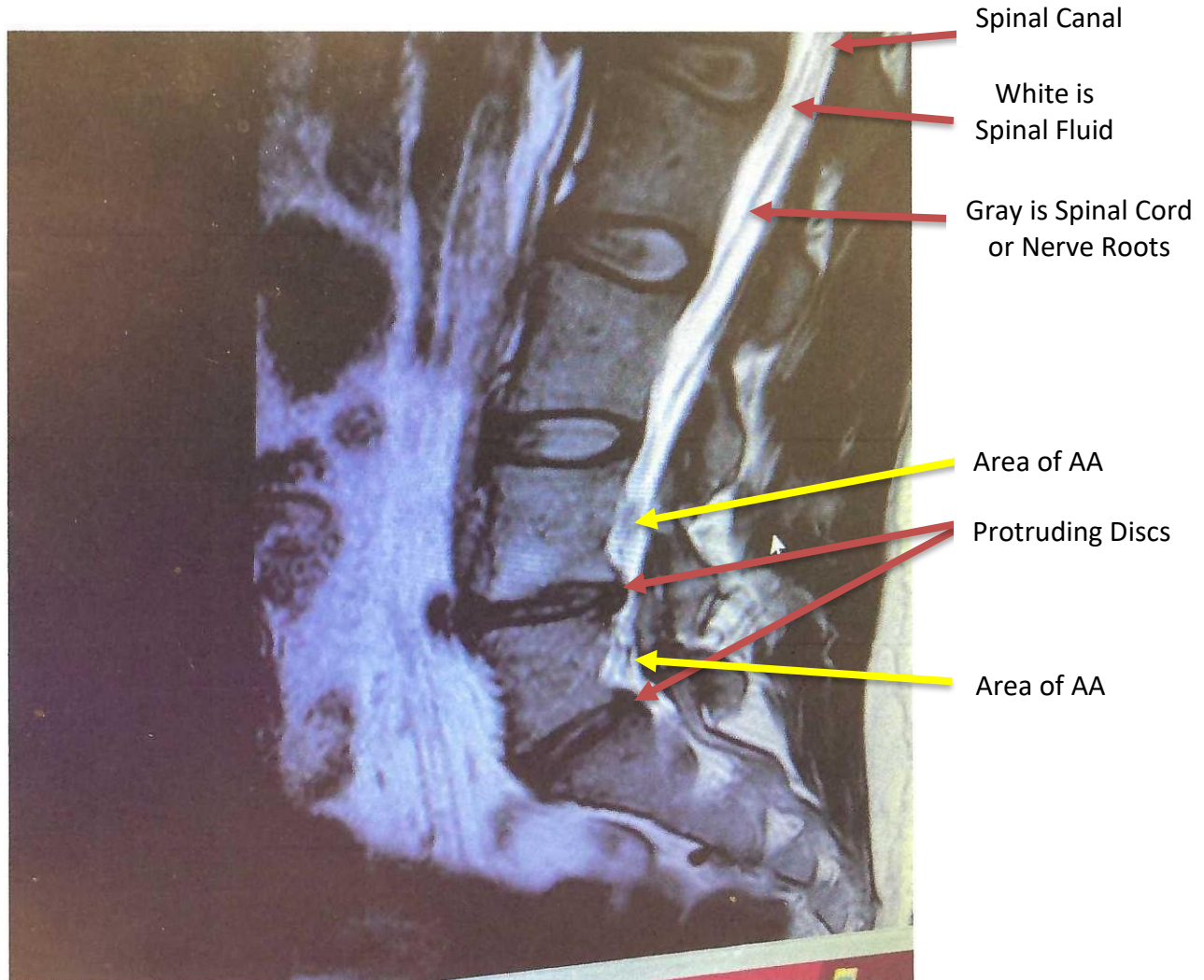


MRI SERIES: PROTRUDING DISCS LEAD TO ADHESIVE ARACHNOIDITIS

40-year-old woman with EDS, AA, and the Intractable Pain Syndrome



THE CASCADE OF INFLAMMATION

Protruding discs are inflamed. They push on the dura-arachnoid covering of the spinal canal and inflammation spreads into the covering and nearby cauda equina nerve roots. Inflammation eventually produces adhesions which “glue” nerve roots together into an inflamed mass with imbedded nerve roots. The mass may later adhere or stick to the arachnoid-dural covering.

REFERENCES

1. Zang et al. Intervertebral disc cells produce interleukins found in patients with back pain. *Am J Phys Med* 2016;95(6):407-415.
2. Takahashi H, et al. Inflammatory cytokines in the herniated disc of the lumbar spine. *Spine* 1996;21:218-224.

*Published as a public service by the Arachnoiditis Research & Education Project of the Tennant Foundation
336-338 S. Glendora Ave., West Covina, CA 91790-3043*

Phone: 626-919-7476 Fax: 626-919-7497

E-mail: tennantfoundation92@gmail.com www.arachnoiditishope.com www.intractablepainsyndrome.com

This information is not intended to diagnose, treat, cure, or prevent any disease, as this information is for educational purposes only, and is not a substitute for medical advice, diagnosis, or treatment. Please refer to your local qualified health practitioner for all medical concerns.